

ICON GUIDE



VEGAN Vegan Friendly Restaurant

VEGE Vegetarian Friendly Restaurant

HALAL Muslim Friendly Restaurant

Credit Card Credit cards accepted

Cashless, Smartphone payment Cashless, Smartphone payment available

English Speaker English-speaking staff

English Menu English menu available

English Information English information/sign

Wi-Fi Wi-Fi available

Take Out Food available for take-out

Halal Certified Acquired Halal certificate

Prayer room Prayer space available

Prayer Items Prayer mat and compass available to use

VEGAN **VEGE**

Miroku Itsutsubashi / Hachiman Stores

aoba

We make desserts and sandwiches, using organic, pesticide, and additive-free ingredients. You can taste the true flavors of the ingredients in our dishes. We also make gluten-free, Western-style baked confections without animal ingredients or wheat irregularly. Enjoy our items according to the scene. Reservations are required in advance for custom cakes.

Itsutsubashi Store

¥1,000~ ¥980~
OPEN/10:00am - 4:00pm
CLOSE/Irregular

980-0022 2-11-18 Itsutsubashi, Aoba-ku, Sendai

TEL.022-267-6339
http://miroku-sweets.ocnk.net

MAP

Hachiman Store

¥1,000~ ¥980~
OPEN/10:00am - 4:00pm
CLOSE/Irregular

980-0871 3-2-8 Hachiman, Aoba-ku, Sendai

TEL.022-266-5010
http://miroku-sweets.ocnk.net

MAP

VEGAN **VEGE** **HALAL**

ORGAN

taihaku

A takeaway store opened in the nature-rich area of Akiu. A shipping container where you can enjoy vegan & raw (fermented food) sweets (muffins, cookies, tart cakes), drinks, veggie burgers, and many other dishes.

¥432~
OPEN/10:00am - 4:00pm
CLOSE/Monday to Friday * Currently open only on weekends and national holidays

982-0251 44-12 Nakayachiminami, Moniwa, Taihaku-ku, Sendai

TEL.022-796-8259
http://www.life-thyme-plus.com/

MAP

HALAL

KOBAYASHI

miyagino

Take-out only (reservations required at least 3 days in advance) "Halal Gyutan Bento" Using halal-certified beef tongue and non-alcoholic, non-pork-derived seasonings. It also uses a container that heats up by pulling a string, so even those who dislike cold food can choose it without hesitation.

¥1,500
OPEN/9:00am - 3:00pm
CLOSE/Closed only on New Year's Day

983-0803 Head Office Showroom, 3-2-3 Odawara, Miyagino-ku, Sendai

TEL.022-293-1661
http://www.kobayashibento.com/

MAP

VEGE

moroya farm kitchen

wakabayashi

This restaurant is run by a farming family that has been in business for nine generations. Based on local cuisine and incorporating recipes from Japanese, Italian, Chinese, and other cuisines, vegetables freshly picked in season and grown on its farm are arranged and served in a variety of ways. For vegetarian dishes, please make a reservation in advance.

¥900~1,700
OPEN/Lunch, 11:30am - 2:30pm (2:00pm L.O)
Cafe time, Thursday, Friday and Saturday from 2:00pm
CLOSE/Every Monday, first, third and fifth Sunday

984-0032 Yamaka Building 2F, 6-12-2 Arai, Wakabayashi-ku, Sendai

TEL.022-288-6476
https://www.instagram.com/moroya.f.k/

MAP

HALAL

FISHERMAN TEI

- Oyster & Fresh seafood rice bowl -

Natori City

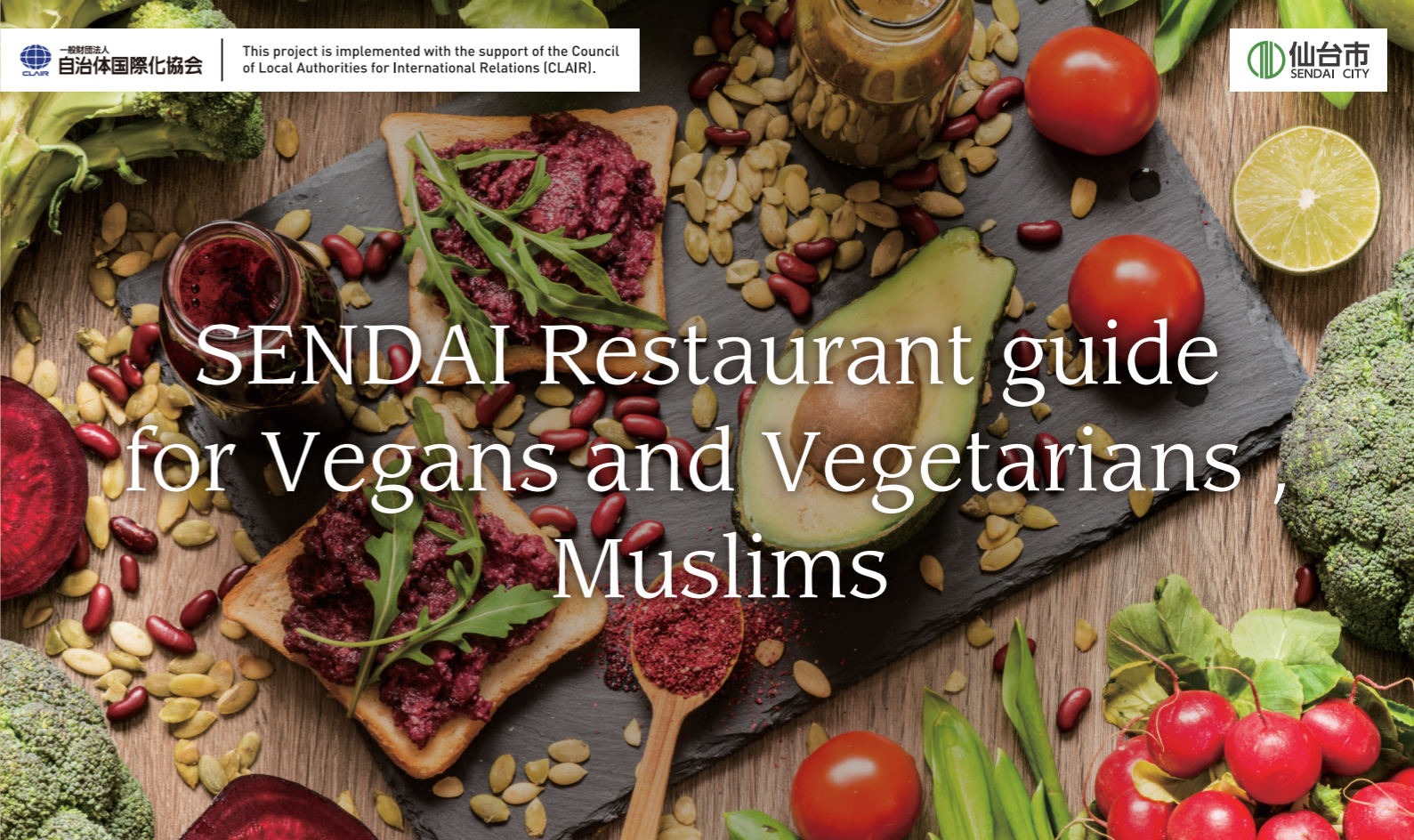
A restaurant to enjoy Sanriku oysters and seafood rice bowls. Each item on the menu has the superior quality that comes from being directly managed by the producer and also has a story behind it. The menu features seafood that has obtained the international MSC and ASC accreditation, certifying sustainability, and we also have halal soy sauce as a condiment.

¥1,500~2,200 ¥1,000~
OPEN/9:30am - 7:30pm (7:00pm L.O)
CLOSE/Open everyday

989-2401 Sendai International Airport 2F, Aza-Minamihara, Shimomasuda, Natori City, Miyagi Prefecture

TEL.0225-90-4569 (Head office)
https://www.sendai-airport.co.jp/guide/fishermantei/

MAP



SENDAI Restaurant guide for Vegans and Vegetarians, Muslims

PICK UP RESTAURANTS

VEGAN **VEGE** **HALAL**

Route227s' Café TOHOKU

aoba

A café restaurant that offers a variety of delicious food from 227 cities, towns, and villages in Tohoku, based on the concept of "communicating the charm of Tohoku through food." As it is located in Kotodai Park in the center of Sendai City, you can savor your meal on the terrace while looking out over "Jozenji-dori Avenue," the symbol of Sendai. We offer a variety of dishes such as peperoncino dishes using plenty of mushrooms from Tohoku and halal curry.

¥1,000~1,500 ¥1,500~3,000
OPEN/11:00am - 11:00pm
CLOSE/Irregular

980-0803 3-1-1 Kokubuncho, Aoba-ku, Sendai

TEL.022-796-9770
https://route227.jp

MAP

VEGAN **VEGE**

Restaurant "Symphony" at The Westin Sendai

aoba

It is a restaurant where the customers, the staff, the food and wine, and the comfortable space all harmonize like a symphony. Guests can enjoy a seasonal vegan course prepared with locally produced ingredients while enjoying the view from the upper floors. (Reservations are required at least three days in advance.)

¥5,200~
OPEN/Lunch, 11:30am - 2:30pm (2:00pm L.O)
Dinner, 5:30pm - 10:00pm (9:00pm L.O)
CLOSE/Open everyday

980-0811 1-9-1 Ichibancho, Aoba-ku, Sendai

TEL.022-722-1234
https://www.the-westin-sendai.com/

MAP

VEGE

Sendai Akiu Hot Spring HOTEL SAKAN

taihaku

The guardians of Akiu onsen; a hot spring inn located in the Okuzashiki or a retreat area of Sendai. Come and try for yourself, a vegetarian take of the traditional ryokan hospitality. (Reservations are required at least three days in advance.)

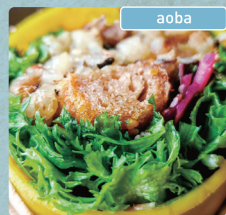
¥19,950~
(Accommodation + breakfast & dinner)
OPEN/The open hours are in line with the lodging
CLOSE/Closed on certain days

982-0241 28 Yakushi, Yumoto, Akiu-machi, Taihaku-ku, Sendai

TEL.022-398-2233
https://www.hotel-sakan.com/

MAP

vegan café & restaurant
Vegeto・LIKO



A healthy junk vegan cuisine restaurant. Tuck into the guilt-free daily specials such as hamburgers, fried chicken, and curry that are often thought of as high-calorie.

¥1,100~2,000
OPEN/11:00am - 5:00pm
CLOSE/Tuesday and Wednesday

980-0811 Shintou Annex Building 2F, 2-6-16 Ichibancho, Aoba-ku, Sendai

TEL.022-796-7728
https://www.instagram.com/vegeto.liko/
MAP

PJ's RASOI
(Indian Creative Dining & Bar)



Offering authentic Indian and creative cuisine. The lunch set is popular for its generous portions, choices of curry, and free seconds of naan or rice.

¥780~ ¥980~
OPEN/Lunch, 11:30am - 3:00pm (2:30pm L.O)
Dinner, 5:30pm - 11:00pm (10:30pm L.O)
CLOSE/Open everyday

980-0022 Third Shokei Building 113, 2-11-18 Itsutsubashi, Aoba-ku, Sendai

TEL.022-225-9006
https://www.hotpepper.jp/strj001148058/
MAP

Indian Restaurant TAJ-2



A variety of popular dishes are available, including dhal curry, vegetable curry, palak paneer, paneer makhani, and kadai paneer.

¥850~1,300 ¥2,000~3,000
OPEN/11:00am - 11:00pm (10:30pm L.O)
CLOSE/Closed only on New Year's Day

980-0021 Sakurai Yakkyoku Building B1F, 2-5-10 Chuo, Aoba-ku, Sendai

TEL.022-716-0810
https://taj2.owst.jp/
MAP

Hotel Metropolitan Sendai
Japanese Restaurant "Serenity"



We have obtained local Halal certification, and offers "Sendai French" cuisine based on orthodox French cuisine using ingredients from the Tohoku region. (Reservations are required at least two days in advance for Halal menus.)

¥2,000~ ¥6,000~
OPEN/6:30am - 10:00am, 11:00am - 1:00pm, 5:00pm - 9:30pm (9:00pm L.O)
CLOSE/Open everyday

980-8477 1-1-1 Chuo, Aoba-ku, Sendai

TEL.022-267-2104
https://sendai.metropolitan.jp/restaurant/list/serenity/
MAP

Hotel Metropolitan Sendai
Japanese Restaurant "HAYASE"



A Japanese restaurant where you can enjoy sukiyaki using local halal-certified beef and the essence of seasonal flavors. (Reservations are required at least two days in advance for Halal menus.)

¥4,000~ ¥6,000~
OPEN/6:30am - 10:00am, 11:00am - 2:00pm, 5:00pm - 9:30pm (9:00pm L.O)
CLOSE/Open everyday

980-8477 1-1-1 Chuo, Aoba-ku, Sendai

TEL.022-267-2143
https://sendai.metropolitan.jp/restaurant/list/hayase/
MAP

Mago Hachi Kitchen



The vegetarian menu item "Vegetari-tan" is based on "Japolitan", a Japanese-style Napolitan stir-fried with soy sauce-based sauce. All ingredients are plant-based. Suitable for vegetarians.

¥700~1,500 ¥700~2,500
OPEN/6:30am - 7:30pm
CLOSE/Open everyday

980-0811 Henn na Hotel Sendai Kokunbuncho 1F, 4-2-12 Ichibancho, Aoba-ku, Sendai

TEL.022-748-4588
https://www.maido-8.com/mago-hachi-kitchen/
MAP

Indo restaurant & cafe.spice
sindur



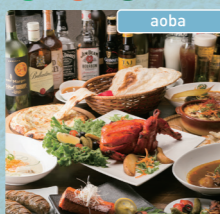
A halal-certified restaurant. For lunch, you can choose a curry set. For dinner, we offer courses for one person or more to fully experience Indian cuisine according to your liking.

¥999~ ¥1,000~1,999
OPEN/11:00am - 3:00pm (2:30pm L.O)
5:30pm - 10:00pm (9:30pm L.O)
CLOSE/Closed only on New Year's Day

980-0022 2-4-10 Itsutsubashi, Aoba-ku, Sendai

TEL.022-215-2488
https://sindursendai.wixsite.com/home
MAP

Spice Art
(Indian Creative Dining & Bar)



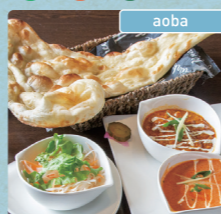
We are proud of our naan prepared by an Indian chef who has experience in five-star hotels. Popular for its texture, crispy on the outside and soft on the inside. It tastes even better when paired with curry.

¥780~ ¥980~
OPEN/Lunch, 11:30am - 3:00pm (2:30pm L.O)
Dinner, 5:30pm - 11:00pm (10:30pm L.O)
CLOSE/Open everyday

980-0011 Pal Kamisugi 1F, 2-4-26 Kamisugi, Aoba-ku, Sendai

TEL.022-225-9006
https://www.spiceart.net/
MAP

Indian Restaurant
Namaskar Sendai



A restaurant that has been loved for many years for its authentic Indian cuisine prepared by an Indian chef. The restaurant offers a variety of menu items, including vegetarian sets with samosas and curry.

¥850~ ¥950~
OPEN/Lunch, 11:30am - 3:00pm (2:30pm L.O)
Dinner, 5:00pm - 10:30pm (10:00pm L.O)
CLOSE/Open everyday

980-0811 TK Building B1, 2-2-11 Ichibancho, Aoba-ku, Sendai

TEL.022-222-7701
https://namaskar.owst.jp/
MAP

Dashiro



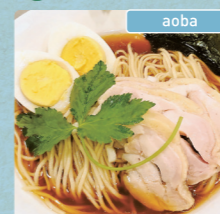
Serves meat, vegan options available. Has one vegan-friendly ramen dish consisting of miso flavored thick soup with vegetables.

¥690~1,000
OPEN/11:00am - 9:00pm (8:45pm L.O)
CLOSE/Closed only on New Year's Day

980-0811 TK Building 1F, 2-2-11 Ichibancho, Aoba-ku, Sendai

TEL.022-204-4890
https://www.dashiro.com/
MAP

Dashiro nibo



The soy sauce-based soup made from aged non-alcoholic soy sauce, and the soup stock made from horse mackerel with the flavor of seafood is exquisite. A bowl of ramen topped with halal chicken is recommended for both Japanese and Muslims customers.

¥750~1,000
OPEN/11:00am - 1:00am (12:45am L.O)
CLOSE/Closed only on New Year's Day

980-0811 Kakitoku Bldg 1F, 4-9-1 Ichibancho, Aoba-ku, Sendai

TEL.022-393-4988
http://dashiro-nibo.com/
MAP

Pizzeria vegetariana
L'Albero



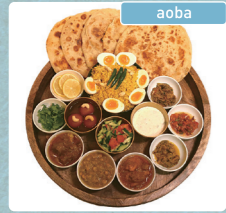
A vegetarian restaurant featuring seasonal vegetables collected from its neighborhood region. No animal products other than eggs and dairy products are used. Pizza is baked in a hand-made new kiln so that it is crispy outside and tenderly chewy inside.

¥1,500~2,000
OPEN/Lunch, 11:00am - 4:00pm (3:30pm L.O)
Dinner, 5:00pm - 9:00pm (8:00pm L.O)
(Wed.: Only lunch)
CLOSE/Thursday (when Thursday falls on a holiday, it is a business day)

989-3124 23-1 Kamiyashi-Shirasawa, Aoba-ku, Sendai

TEL.022-392-9570
https://albero-pizza.com/
MAP

Spicy Curry Halal Hub



Bengali/Bangladeshi Curry Restaurant. We use 100% HALAL ingredients. 3 flavors curry set (mutton, chicken, daal) is one of popular dishes. We don't use any animal products in daal curry.

¥1,000~2,000 ¥1,500~2,500
OPEN/Mon. - Wed, 10:00am - 3:00pm, 5:00pm - 10:00pm
Fri. - Sun, 10:00am - 10:00pm
CLOSE/Thursday

980-0871 2-12-11 Hachiman, Aoba-ku, Sendai

TEL.022-208-3587
https://www.halalhub.jp/
MAP

Thai Cuisine SABAI SABAI



Our dinner menu offers more than 100 types of dishes, including the classic tom yum kung and green curry. Committed to pursuing authentic flavors to satisfy Thais and those that have lived in Thailand.

¥1,000~ ¥2,000~
OPEN/11:00am - 3:00pm
5:00pm - 11:00pm
CLOSE/Monday

980-0801 2-6-32 Kimachidori, Aoba-ku, Sendai

TEL.080-6558-9771
https://sabaisabai.jp/
MAP

La Maison Rose



A small patisserie offering sweets inspired by European and American flavours. We strive to replicate the taste and texture of your favourite comfort foods using plant-based ingredients. Pair your sweets with our assortment of drinks! Sweets menu changes daily, seasonal menus also available. Everything is takeout only.

~¥1,000
OPEN/Tue. - Fri, 11:00am - 5:00pm
Sat, 10:00am - 3:00pm
CLOSE/Sunday, Monday, national holidays

981-0905 3-1-48 Komatsushima, Aoba-ku, Sendai

TEL.None
https://www.instagram.com/lamaisonrose_sendai/?hl=en
MAP

NOBATTE



An Italian restaurant where you can enjoy Italian and Tohoku wines. Offering dishes using ingredients primarily produced in Miyagi Prefecture. We are flexible with halal and vegetarian menus. (Reservations required at least two days in advance).

¥5,000~
OPEN/5:00pm - 11:00pm (10:30pm L.O)
CLOSE/Sunday and national holidays

980-0811 M-ONE Building 4F, 4-3-11 Ichibancho, Aoba-ku, Sendai

TEL.070-6619-7029
https://ja-jp.facebook.com/NOBATTE/
MAP

Vegetables Restaurant kibako



You can enjoy homemade freshly baked bread and soup, and Western dishes featuring pesticide-free seasonal vegetables. A vegetarian menu is available with advance reservation.

¥1,000~2,000 ¥4,000~
OPEN/11:00am - 4:00pm
Dinner with reservations 18:00-20:00
CLOSE/Sunday, Monday, national holidays

989-3216 3-7-6 Takanohara, Aoba-ku, Sendai

TEL.022-343-6011
http://www12.plala.or.jp/ua2003au/
MAP

Keyaki café



A local production local consumption café located in Sendai, and using local ingredients abundantly. All of our special vegetables are fresh and sent directly from growers in the prefecture. You can order popular vegetable & fruit plates, carrot steaks, and also our signature salads for delivery & takeout. Enjoy Sendai in a calm and open space with 80 seats.

¥800~2,500 ¥4,000~8,000
OPEN/10:00am - 7:00pm (6:30pm L.O)
Available until 22:00 for private parties
CLOSE/Same as Fujisaki Department Store's

980-0811 Fujisaki Department Store Main Building 3F, 3-2-17 Ichibancho, Aoba-ku, Sendai

TEL.022-395-9234
https://www.instagram.com/keyakicafe_fujisaki/
MAP